



A World Leader for **Weigh, Price, Labelling** at any Speed.

Retail Wrappers

AW-5600ATII PC Based Wrapper

PBI Part# 8055600



8055600

DIGI AW-5600ATII is a high-performance automatic weigh-wrap-label system designed for operational comfort and environmental friendliness. Reduces work load with easy and simplified operation, and conserves film and label consumption to achieve lower cost and a smaller environmental footprint.

High Productivity

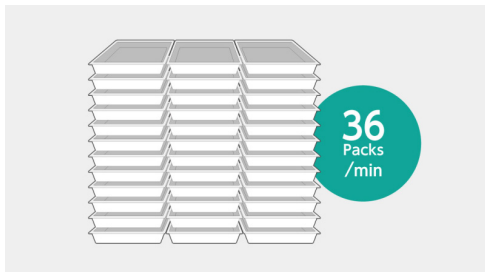
Increases productivity with high speed processing of up to 36 packages a minute. Automatically determines the optimum wrapping conditions by adjusting the degree of film stretching, depending on commodity size fed into the machine.

Economical & Ecological

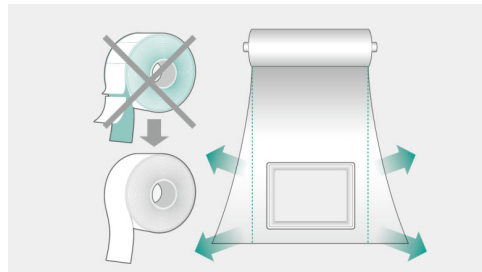
Super-stretch technology makes the best use of film and helps reduce film usage, while linerless labels eliminate wasteful margins and help reduce label consumption. An energy conservation mode helps reduce power consumption while the machine is not operating.

Labelling Options: Twin Labeler, POP Labeler, Bottom Labeler, Linerless Labeler

Fully integrated weigh-wrap-label system designed for operational comfort and environmental friendliness



Maximize Productivity



**Save Time & Cost
Reduce Waste!**



AW-5600CPII Wrapper**Semi-Automatic**

8055600CP2

Low Cost!**PBI Part# 8055600CP2**

AW-5600CPII is the basic model of the 5600 series, providing an impressive 30 packages/minute throughput in a reduced-cost design. Its compact form retains the full-spec 300dpi high-resolution printer and extra-large full-color touchscreen display that are standard with the 5600 series. The newly developed rotational labeler arm allows fully automatic application of linerless labels. Variations include models with manual or automatic label application.

*High Productivity
Economical & Ecological
Easy Clean Up, Every Time*

AW-5600FXII Wrapper

8055600FX

PBI Part# 8055600FX

DIGI AW-5600FX is an integrated semi-automatic weigh-wrap-label system featuring the enhanced Pick-Pack System.

Handles a Wide Range of Wrapping Needs

The FX is superb at wrapping a challenging array of products. Fragile trays, irregularly-shaped trays, and even items without trays like fruits and vegetables, are quickly and beautifully wrapped and labelled. The FX will drastically reduce the need for cumbersome hand wrapping operation.

Small Foot Print

Only a small footprint of 31.5"-36.8" is needed for installation.

Wraps Faster

Processes 17 packs per minute (max). This increases operation efficiency.