



Market Equipment Inc.

Call for PBI Service: (562) 595-4785 or (209) 839-9280 (Toll Free) 1-800-421-3753

**Fiberglass Trays & Pans**



For storing and displaying meats, fish, poultry, deli items and bakery goods. Constructed of high strength fiberglass. They're very durable, with no sharp edges, and easy to clean with a damp; cloth or spray rinse. Features reinforced edges for extra durability; and "Dri-Stack" separators, molded into the underside of the rim, to allow air to circulate when trays and pans are drying. Available in five attractive colors: salmon, yellow, blue, green, white and black.

**Market Tray - 3/4" Deep**

- 4801290 26" long x 8 1/2" wide x 3/4" deep, white
- 4801309 26" long x 8 1/2" wide x 3/4" deep, black
- 4801260 30" long x 6 1/2" wide x 3/4" deep, white
- 4801276 30" long x 6 1/2" wide x 3/4" deep, black
- 4801320 30" long x 8 1/2" wide x 3/4" deep, white
- 4801340 30" long x 8 1/2" wide x 3/4" deep, black
- 4801410 30" long x 10 1/2" wide x 3/4" deep, white
- 4801430 30" long x 10 1/2" wide x 3/4" deep, black
- 4801500 30" long x 12 1/2" wide x 3/4" deep, white
- 4801525 30" long x 12 1/2" wide x 3/4" deep, black

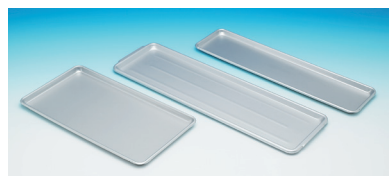
**Market Pan - 2" Deep**

- 4801590 26" long x 8 1/2" wide x 2" deep, white
- 4801610 26" long x 8 1/2" wide x 2" deep, black
- 4801560 30" long x 6 1/2" wide x 2" deep, white
- 4801580 30" long x 6 1/2" wide x 2" deep, black
- 4801620 30" long x 8 1/2" wide x 2" deep, white
- 4801640 30" long x 8 1/2" wide x 2" deep, black
- 4801650 30" long x 10 1/2" wide x 2" deep, white
- 4801656 30" long x 10 1/2" wide x 2" deep, black

**Market Tray  
1 1/16" Deep (Bakery Size)**

- 4801350 26" long x 9" wide x 1 1/16" deep
- 4801530 26" long x 18" wide x 1 1/16" deep

**Aluminum  
Platters 3/4" Deep**



- 4805070 6 1/2" x 15" chop platter
- 4805130 6 1/2" x 24" chop platter
- 4805160 6 1/2" x 27" chop platter
- 4806960 6 1/2" x 30" chop platter
- 4805220 8 1/2" x 15" steak platter
- 4805280 8 1/2" x 24" steak platter
- 4805310 8 1/2" x 27" steak platter
- 4805340 8 1/2" x 30" steak platter
- 4805460 10 1/2" x 15" roast platter
- 4805640 10 1/2" x 27" roast platter
- 4805700 10 1/2" x 30" roast platter
- 4806030 12 1/2" x 30" roast platter

**Aluminum Pans**



- 4806690 8 1/2" x 30" x 2" hamburger pan
- 4806930 10 1/2" x 30" x 2" ground meat pan